



LEAVERITE NEWS

Grand Junction Gem and Mineral Club
2328 Monument Road
P.O. Box 953, Grand Junction, CO 81502



PRESIDENTS MESSAGE BY MEL BERSCH



The Holidays are upon us and I would like to wish you all a safe and happy holiday season.

I am happy to report that Teri Drost has filled all the board positions. Thank you, Teri, and thank you to all the people who volunteered for the positions. Show will remain on Mother's Day for next year. We will be raising the entrance fee to \$5.00 for adults, seniors (65 or older) and veterans \$4.00, children 11 and under will still be free. Yard & Rock Sale on Saturday October 28th went well. I would like to thank all who brought items to sell at the yard sale and especially all who came to help Judy with pricing, selling and moving of all the merchandise. There was not as much at the rock sale as was hoped but the members who did participate, did well. Thank you, Jim Schultz, for organizing the rock sale.

The board will meet on Wednesday, November 8th at 7:00pm at my house- 248 Little Park Road. Once again, we have a lot to cover at this meeting, so I hope all can make it. Mineral Group will not meet until next year on January 26, 2018 at 6:30 starting with a potluck at the Bersch's house, 248 Little Park Road.

November, 2017

Volume 34 Number 8

Sunday	Monday	Tuesday	Wednesday	Thursday	Friday	Saturday
1	2	3	1 9-12 Lapidary 12-3 Open Shop	2	3	4 9-12 Open Shop 
5	6	7  12-3 Chain Silver Smithing	8 9-12 Lapidary 12-3 Open Shop Board Meets	9 Cookie Night Guest Speaker 6:30	10 2018 Field Trip Planning 7 pm	11 9-12 Open Shop 12-3 Wire Wrap Silver Smith 
12	13 1-4 Intarsia	14 9-12 Filagree 12-3 Chain 1-4 Lapidary	15 9-12 Lapidary 12-3 Open Shop	16 9-12 Filagree	17	18 9-12 Open Shop 12-3 Wire Wrap Silver Smith
19	20 1-4 Intarsia	21 9-12 Filagree 12-3 Chain 1-4 Lapidary	22 9-12 Lapidary 12-3 Open Shop	23 	24	25 9-12 Open Shop 9:30 Facetors Group 12-3 Wire Wrapping Silver Smithing
26	27 1-4 Intarsia	28 9-12 Filagree 12-3 Chain 1-4 Lapidary	29 9-12 Lapidary 12-3 Open Shop	30 9-12 Filagree	1	2 9-12 Open Shop 12-3 Wire Wrapping Silver Smithing

Earl Vincent Vitus
May 9, 1926 - October 7, 2017

Earl Vincent Vitus was born on May 9, 1926 in Oakridge, Oregon, to Ralph and Mary Vitus. He grew up in Eugene with his foster family Jeppie and Lucille Jensen. He lived there until he was 17, when he enlisted in the Navy in 1943. He served on LST651 transport carrier and was at all the major battle areas of the South Pacific. After the war he enrolled in the Northwestern College in Minneapolis, Minnesota where he earned a degree in speech and completed seminary and became an ordained Baptist minister. It was also there that he met Shirley Langerak and the team of Earl and Shirl was born. They were married in 1954 and moved to Eugene, Oregon.



They decided to go into teaching full time and their first teaching experience was in Williston, North Dakota. Two years later, Earl became superintendent of the Sheldon Unified District in Sheldon, North Dakota. In 1960, they moved to Grand Junction, Colorado where he spent 28 years teaching at Grand Junction Junior High, Central High School, and Orchard Mesa Middle School. He retired in 1988.

Earl was an active member of Grand Mesa Jeep Club. Under the moniker of Frank Buck as commander, he led trips to many arches, Indian ruins and scenic areas. They were also active members of The Museum of Western Colorado and took all the archeological classes offered through the museum. That led to their active participation in rock art research. They were life-time members of the Grand Junction Gem and Mineral Club. He and Shirl were active round and square dancers as members of numerous square dance clubs in the Valley.

Earl was often heard to say, "I have lived in the best of times and in the best places. I have been truly blessed."

ANNUAL PUBLIC YARD AND ROCK SALE!!



2018 MEMBERSHIP DUES

Please pay your 2018 membership dues by December 31st to keep your name and contact information in the current membership roster. Annual dues: single adult: \$30.00, Couple \$ 40.00

Make checks payable to: Grand Junction Gem and Mineral Club.

Mail to : Evita Schultz, 686 Long Rifle Road, Grand Junction, CO 51507



Classes

Cindy Teare-Chairperson 462-6806

Monday Oct 16th, 1-4 pm, Intarsia with Jim Lynch

Tuesday – Thursday, 9-12am, Filigree with Pam Bersch

Tuesday, 12-3 pm, Chain Making and Chainmaille with Cindy Teare

Tuesday, 1-4 pm, Lapidary with Wayne McMacken

Tuesday, time? Silversmithing with JoAnn Piburn

Wednesday 9-12 pm, Lapidary with Judy Mason and Sylvester Spaeth

Saturday 9 am, Mineral Identification with Bill Hood: Class began Oct 28th

Saturday 12-3 pm, Wire Wrapping with Joyce Trump

Saturday 12-3 pm, Silversmithing with Cindy Teare

Field Tips



Upcoming Field Trips

November 4th Sands Flats, Utah lead by Jim Schultz (petrified wood).

Attention!!! The meetup location has been changed, due to a conflict with a bicycle event that is going to be using our parking lot beginning at 7:00 am THAT SAME MORNING. Therefore, we will be meeting at the Safeway parking lot at 2512 Broadway where Albertson's used to be.

This Meetup trip is limited to 20 people. If you sign up to go and find out that you are unable to attend, PLEASE take your name off the list so that someone on the waiting list may take your place. Also, if the trip is cancelled or things change, YOU can be notified. Let's be courteous about this!

We will be going to the Buckhorn Mesa area again to look for small petrified twigs, large petrified wood, and Tempskya specimens. This has been a very productive area for the last couple of years. A four wheel drive will be best for this trip. Although it is not a difficult road, a passenger car will not be adequate. We will meet at the clubhouse and carpool as much as possible. Bring your lunch, drinks, and digging tools. Remember, MEMBERS only, and you must have a Release Of Liability on file.

This will be the last field trip for this year.

2018 Field Trip Planning

Welcome all that are interested in helping plan the field trips for 2018. November 10, Friday evening at 7 pm we will discuss the great trips of 2017 and then decide where and when we go for the 2018 field trips...bring your thoughts and paperwork to help make the 2018 season an even better than 2017 year. No limit on number of people that can present their ideas and time to travel next year.. See you all then. Wayne

A Brief Walk Through Time
Stories of Earth
*The John McConnell Math & Science Center
Grand Junction Gem and Mineral Club*

A Brief Walk Through Time presentation for Science Week for the John McConnell Math and Science Center was held October 14, 2017. Bambi reported that 65 visitors attended the presentations.



It is estimated by today's geologists, astronomers and astrophysicists that our Universe is approximately 13.7 billion years old. Scientist now estimate that four and one-half billion years ago the Earth formed on the edge of one of the Milky Way's distant spirals, the *Orion Arm*. There is suggested evidence that the Earth was 98 percent covered with water from its earlier days of heavy cosmic bombardment. Paleo-biologists reported that microbes eventually thrived in the sulfuric elements of Earth's liquid surface.... Until slowly the Earth became quieter as it cooled, letting in the Sun's electro-magnetic radiation flood the Earth with sunlight. Here our story begins:

Early Earth Formations: As the Earth cooled and became quiet the volcanoes slowly reduced their voluminous upheaval allowing the formation of the solid bedrock foundation of our continents. The Earth became stable with only a slow mixing and exchanging of land forms caused by subductions of land lying on the edge of colliding tectonic plates. As the Earth became quieter, sunlight began streaming through the dense, hazy layers of toxic chemicals, providing a new energy form for the hearty extremophiles. These were the first organisms to apply *photosynthesis* in the metabolism of energy-formation which was needed for plant life. In this process cyanobacteria eventually exhaled excess "free" oxygen into the atmosphere.

The red color of our Colorado National Monument is because of *rust*, the interaction of iron, oxygen and water. The world's largest source of iron ore formed from the minerals within *Banded Iron Formations*...quarried from ancient sea beds. This layering of iron and microbial-induced sediment on the ocean floor clarified the seas and oceans of toxic iron particles, leaving salty, clean water filled with nutrients. The oceans changed from brown to blue. The *Cambrian Explosion* followed into the clean waters of the Earth.

Scientists today believe that during the Cambrian Period the seas and oceans were filled with strange and exotic creatures, evidenced by fossil forms left in ancient deposits. Seeds began to appear on the land...cattails grew in swampy areas. In the Carboniferous Period ferns and trees gave us our future oil, gas, and coal reserves to keep us warm and to fuel our cars and city lights. In the Triassic and Jurassic Periods 200-foot tall trees with seed-cones lived side-by-side with the taller sauropod dinosaurs and tiny mammals. Ancient trees gave us our *petrified forests* to wonder at.

In the Cretaceous Period grasses and then flowers became abundant to handle the enormous diversity of animals, insects, and bats.... each competing for survival...producing the beautiful and wondrous world we have today. The *Green River Formation* of Colorado, Utah and Wyoming preserved this Period's ancient leaves, seeds, flowers, insects and fish for us to study with our curious minds...

Edited from article by Pat Mitchell, Ph.D.

Grand Junction Gem and Mineral Club 2016

November Birthstone

Topaz

Topaz is a gemstone available in a rich rainbow of colors. Prized for several thousand years in antiquity, all yellow gems in antiquity were called topaz. The most prized color of topaz is called Imperial topaz after the Russian Czars of the 1800s and features a magnificent orange body color with pinkish undertones. Topaz also comes in yellow, pink, purple, orange, and the many popular blue tones.

Citrine

Citrine, the other birthstone for November is known as the "healing quartz". This golden gemstone is said to support vitality and health while encouraging and guiding hope, energy and warmth within the wearer. Citrine can be found in a variety of shades ranging from pastel yellow to dark brownish orange. It is one of the most affordable of gemstones and plentiful in nature. Citrine is found most frequently in Brazil, Bolivia, and Spain.

November Gem and Mineral Shows in the Region

Days	Show	Location	Email
3-5	High Desert Helpers,	Black Canyon City, AZ	darlynndd@q.com
4-5	Contra Costa Mineral & Gem	Concord, CA	showinfo@ccmgs.org
4-5	San Diego Mineral and Gem	San Diego, CA	rtourmaline2@aol.com
10-12	LLD Productions	Santa Ana, CA	mzexpos@gmail.com
11-12	Sutter Buttes Gem & Mineral	Yuba City, CA	horita@comcast.net
18-19	El Cajon Valley Gem and Mineral	Lakeside, CA	ecvgms@gmail.com
18-19	Mining Supplies and Rock Shop	Hesperia, CA	cynmandell@me.com

Scientists discover 'fish lizard' fossil in India

10-26-17

© Provided by AFP

An excavated ichthyosaur skeleton near Lodai village in the Kutch district of Gujarat state in western India. Indian scientists said on Thursday they had identified a prehistoric marine reptile fossil discovered in a western desert region known as the subcontinent's Jurassic Park.

The 150-million-year-old marine reptile known as "ichthyosaur" is the first of its kind found in India and was unearthed by a team of local and German geologists. The 5.5-meter (18-foot) specimen was uncovered in the Kutch desert in Gujarat in January 2016, but scientists took more than a year to identify the rare fossil.



If you shop on Amazon.com we would like you to try AmazonSmile. AmazonSmile is a website operated by Amazon that lets customers enjoy the same wide selection of products, low prices, and convenient shopping features as on Amazon.com and the AmazonSmile Foundation will donate 0.5% of the price of eligible purchases to the charitable organizations selected by customers. We would hope you choose Grand Junction Gem & Mineral Club!

Coins
Metal Detectors
Prospecting Supplies

Dependable
Products and Service

Mr. Detector

David J. Lehmann

970-252-0429 • Fax: 970-252-8803
1134 N Townsend • Montrose, CO 81401
Toll Free: 866-812-9414 • info@mrdetector.com



Stout's Electric
Motor Service, Inc.
430 S. 4th Street
Grand Junction, CO 81501
Phone 970-243-3944
email sales@stoutselectric.com

SALES & SERVICE
rewind-repair
AO SMITH
BALDOR
CENTURY
FASCO
GENERAL ELECTRIC
UNIVERSAL
WEG

LARGEST STOCK OF CAPACITORS IN WESTERN COLORADO

Grand Junction Gem and Mineral Club

Officers

President	Mel Bersch	242-3134
Vice President	Mike Burritt	260-3897
Co-Secretary	Anita Martinez	434-9270
Co-Secretary	Chris Henderson	719-244-3192
Treasurer	Pam Bersch	242-3134

Directors

Pat Martinez	434-9270
Cindy Teare	462-6806
Teri Drost	256-0983
Jim Schultz	242-0428
Betty Jo (BJ Brown	241-3051

Committee Chairpersons

Audit	Kathy Ericson	623-2522
Building and Ground	Sylvester Spaeth	846-5716
Compliance	Judy Nason	250-9128
Correspondence	Jim Schultz	242-0428
Decorating	Bambi Harmon	216-4540
Display Cases	Linda Dunham	623-3610
	Val Meduros	773-4244
	Carmen Bruno	773-4247
Education	Cindy Teare	462-6806
Field Trips	Wayne Sims	314-2970
Funding/Constr.	Mike Cosby	589-0687
Historian		
Hospitality	Judy Nason	250-9128
Inventory	Pat Martinez	434-9270
Name Tags	Melinda Hanson	712-6972

Leaverite Editors

Librarian

Meet-Up

Membership/Badges

Carrie Riggs and

Nominating

Publicity

Scholarships

Shop Foremen

Show

Show Assistant

Supplies

Vests

Website

Lorrie Wallace	250-1122
JoAnn Whalen	424-2007
Joyce Frost	255-7078
Jim Schultz	242-0428
Evita Shultz	242-0428
Sue Smith	245-5602
Teri Drost	260-2478
Wayne McMacken	208-2534
Bill Hood	241-8020
Thom Ericson	623-2522
Scott Pugsley	972-953-7735
Wayne McMacken	208-2534
Bambi Harmon	216-4540
Evita Shultz	242-0428
Linda Sims	314-2970
John Mayerik	243-8589

Board Meeting

The board will meet at Mel Bersch's house, 248 Little Park Road, at 7:00 pm on the Wednesday before the 2nd Thursday Cookie Meeting each month. All club members are welcome to attend. Hope to see you there.

Club Information

The Grand Junction Gem & Mineral Club, Inc. is affiliated with the American Federation of Mineralogical Societies, and the Rocky Mountain Federation of Mineralogical Societies. The club is located at 2328 Monument Road Grand Junction, CO, mailing address: P. O. Box 953, Grand Junction, CO 81502 The Club is a nonprofit, 501(c)(3 tax-exempt, educational organization. Our purpose shall be exclusively educational and social: To increase and disseminate knowledge of the earth sciences pertaining to minerals, gems, rocks, artifacts, fossils and similar subjects; To promote and perpetuate knowledge of the lapidary arts; To encourage field trips; To encourage greater public interest and education in gems, fossils and minerals, cooperating with established institutions in such matters. The Grand Junction Gem and Mineral Club meets on the second and fourth Thursday of each month at 6:30 pm in our club building. June, July, and August meetings will be on the fourth Thursday only. November and December meetings will be on the second Thursday only. Our Annual Show is Mother's Day Weekend and is held at Two Rivers Convention Center at 159 Main St, Grand Junction, CO 81501. Classes and workshops are offered throughout the year and are announced in the newsletter.

The Facetors Group

The Facetors Group meets at the clubhouse on the 3rd Saturday of each month at 9:30 am. They have a Project of the Month and a People's Choice. They also have teachers available for one-on-one classes. Contact Connie Duncan at 244-2984 for information about the group or classes.

The Grand Valley Gold Prospectors Group

The Grand Valley Gold Prospectors Group is now part of the Gem and Mineral club. They will meet each month at the clubhouse at 7:00 pm on the 2nd Tuesday. Everyone is welcome to attend the group. P.O. Box 1357 Grand Junction, CO 81501. Laura Adamson pres., 260-6375; Robert Hubbard vice pres., 254-1449; Chuck Shepard Secretary, 270-5807

The Mineral Group

The Mineral Group meets at the Bersch's, 248 Little Park Rd, at 6:30, on the Friday after the 4th Thursday's Club Meeting and is open to all club members and guests. A potluck will be followed by discussion and microscopic images of various minerals. Please bring up to 5 specimens, and/or other minerals you wish to look at for the discussion.

New Members

Welcome to the Grand Junction Gem and Mineral Club. Include your email address when you register to receive newsletters and updates. Check out the website for past newsletters and general information. Order a vest made to your size from Linda Sims for \$20.00 and a name Tag from Melinda Hanson for \$10.00. Be sure to sign up for some classes to learn how to use the machines in our shop so you can participate in open shop.

Dues

Our calendar year is January 1 - December 31. Dues are due by January 1 but must be in by January 30 for names to be included in the Club Directory. Please pay your dues at the meeting or send check made out to Grand Junction Gem and Mineral Club, P. O. Box 953 Grand Junction, CO 81502. Prospective members should attend one general meeting to obtain a membership application. Annual dues will be prorated after July 1st.

Adult Member - \$30.00 (18+), 2nd Adult, same household - \$10.00 Children under 18 years, same household - No Cost

Club Rules and Regulations

The notebook of rules and regulations is available on the front table at all meetings for members to read.

Gem and Mineral Classes

Most classes are 6 weeks. Member's cost \$30.00. Non-member's cost is \$60.00. The cost of the classes is based on 6 weeks and prorated when the class is shorter. Please contact instructors to sign up for classes.

Class	Instructor	Phone	Open Shop
Beading	Tiny Blasdal	858-7975	Shop Chairman: Thom Ericson 623-2522
Chain Making	Cindy Teare	462-6806	Shop Supervisors:
Faceting	Connie Duncan	244-2984	Wednesday: 12-3 Thom Ericson 623-2522
Filigree	Pam Bersch	242-3134	Saturday: 9-12 Scott Pugsley 972-953-7735
Intarsia	Jim Lynch	361-2123	Previous instruction in use of equipment is required
Lapidary	Jim Schultz	242-0428	before using any tools or machines in the shop.
Lapidary	Mike Burritt	260-3897	Sign in each time you use the shop.
Silversmith	JoAnn Piburn	245-1669	Help with the clean-up before leaving.
Silversmith	Wayne McMacken	208-2534	Shop fee is \$5.00/session.
Wire Weaving	JoAnn Piburn	245-1669	Slab saw \$.26 per square inch.
Wire Wrap			Always—Safety First

The Leaverite News

The Leaverite News is your newsletter. Articles, ideas and news should come from the club members. If you are an officer, director, or committee chair person you should plan to submit monthly updates by the 15th of each month. News should be emailed to leaveritenews@gmail.com or contact Lorrie Wallace (250-1122 or JoAnn Whalen (424-2007, 554 Casa Rio Ct., Grand Junction, CO, 81507. *Leaverite News is published nine months of the year (Sept-May by the Grand Junction Gem and Mineral Club, Inc. Articles printed in this newsletter are the experiences and/or opinions of the individuals submitting them. They do not necessarily reflect the views or opinions of the Grand Junction Gem and Mineral Club, nor of the editors. Articles written without a byline are written by the editor. We are not responsible for authenticity, safety, or reliability of publications. All articles/photos are included in accordance to fair use for research and education. Caution and safety should always be practiced when trying out any new idea, venture or exploration in the field. We request corrections and/or additions to articles.*

Grand Junction Gem and Mineral Website

Our website, www.grandjunctionrockclub.org, has meeting information, Leaverite Newsletter, Classes, Field Trips, & Photo Gallery. Send information to John Mayerik; 243-8589; email Grandjunctionrockclub@gmail.com

Meetup

Meetups are neighbors getting together to learn something, do something, share something. The Club is registered at the Grand Junction Meetup. Go to http://www.meetup.com/cities/us/co/grand_junction/ to register or for information or call Jim Schultz at 242-0428.

Summary of Minutes of the Gem and Mineral Club

**Board Meeting
October 11, 2017**

Old Business:

The Yard Sale will include a rock and jewelry sale of which 40% of the proceeds will go to the club. It will be on Saturday Oct 28th from 8-5pm. Judy Nason is in charge of the yard sale and Jim Schultz will head the rock sale.

Classes: Remind teachers that students must be members and attend at least two meetings before they can attend classes at the membership rate.

Bill Hood will teach Mineral Identification to no more than 18 students at the end of October.

Pat Martinez will inventory physical assets.

Building Funds:

The Board voted to have Tom Sylvester fulfill county requirements for a building permit. This includes the land survey at \$2000 and \$350 for the county paperwork.

Members who donate to the building fund at the Gold, Silver, or Bronze levels will receive a plaque (GOLD \$10,000; SILVER \$5000; BRONZE \$1000).

Show committee Scott Warren will be the show chairman for 2018. He is also doing the advertising and has prepared the postcards (\$107 for printing). The show will remain on Mother's Day weekend. The Board voted to increase the entrance fee to \$5 for the general public and \$4 for seniors (65+) and veterans. Kids under 12 years old will be free.

Finances: The club made a profit of \$680 from the Walt Wright course.

Dues: Please note the due date for payment of 2018 membership dues is January 1st 2018.

New Business:

Nominating Chairman: Terry Dross-nominations for president, vice president, and co-secretary. Thank you to Dave McCollough who agreed to be our treasurer.

Rim Rock Run: The GJGMC parking lot will be used as the starting point for race participants on Nov 4th from 7:00am to 8:00am.

Next Board Meeting will be Nov 8th @ 7:00 at the Bersch's house, 248 Little Park Road.

Submitted by Anita Martinez, co-secretary

Official minutes are posted at the club.

**General Meetings
October 26, 2017**

Old Business:

Correspondence: Earl Vitus has passed away. He was a long-time member of the club. Additionally, Thomas Hunn was severely injured in a motorcycle accident.

Field Trips: chaired by Wayne Sims Nov 4th - Sand Flats, UT, led by Jim Schultz. (petrified wood) Meet at the Safeway store (2148 Broadway) @ 8:00am.

Nov 10th – Please attend this Field Trip planning meeting at the clubhouse at 7:00pm.

Mineral Identification with Bill Hood: Class will begin Oct 28th at 9:00am

New Business:

Nominating Committee: chaired by Teri Dross

We still need nominations for a new president and vice president. Thank you to Dave McCollough and Nancy Schuerr for agreeing to be treasurer and co-secretary, respectively.

Building Fund: The property will be surveyed soon.

Yard Sale: On Saturday Oct 28th there will be a yard sale, from 8-5pm, led by Judy Nason. 100% of the proceeds will go to the club. Items can be stored in the storage container. Call Judy for more information 970-250-9128. Concurrently, there will be a rock and jewelry sale. At least 40% of the proceeds of these sales will go to the club.

Mineral group: will meet for a potluck on Friday night, October 27th at 6:30pm at the Bersch residence.

Photography: Do we want a professional photography group? We might want to start with a class before establishing a group.

Junior Science Group: The Math and Science Center is moving to MSU. Mel Bersch will be donating an alligator gar, which took him seven years to prepare, to this center. Bambi Harmon will not oversee this group after 2018 so she is looking for someone to take on this responsibility. Science week had 65 people attend the "walk through time" presentations. Bambi will not be dealer chairman after 2018. Brad will not do kids corner after 2018.

Annual Rock Show: The club will need two people in 2019 to be the Dealers Chairman and Kids Corner leader after Brad and Bambi Harmon retire.

Please pay 2018 annual membership dues by December 31, 2017.

Mineral Group October 2017

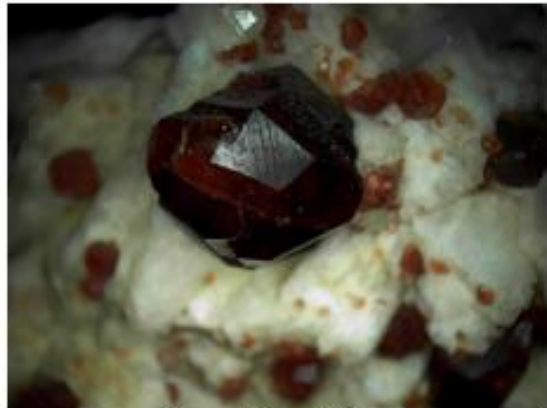
We had a nice group of 15 people to enjoy the evening.

The next meeting will be at the Bersch's house with a potluck at 6:30pm on January 26, 2018. All club members and their guest are welcome. Bring 5 specimens to look at and to discuss from your collection or specimens you need identified. We will try to help.

Here are some pictures from our October meeting.



Stromatolite w/cyanobacteria



Garnet from China



Garnet w/ smoky quartz from China



Coral from Indonesia



Quartz from an unknown locality

Rock Sale

